



2019 REACH

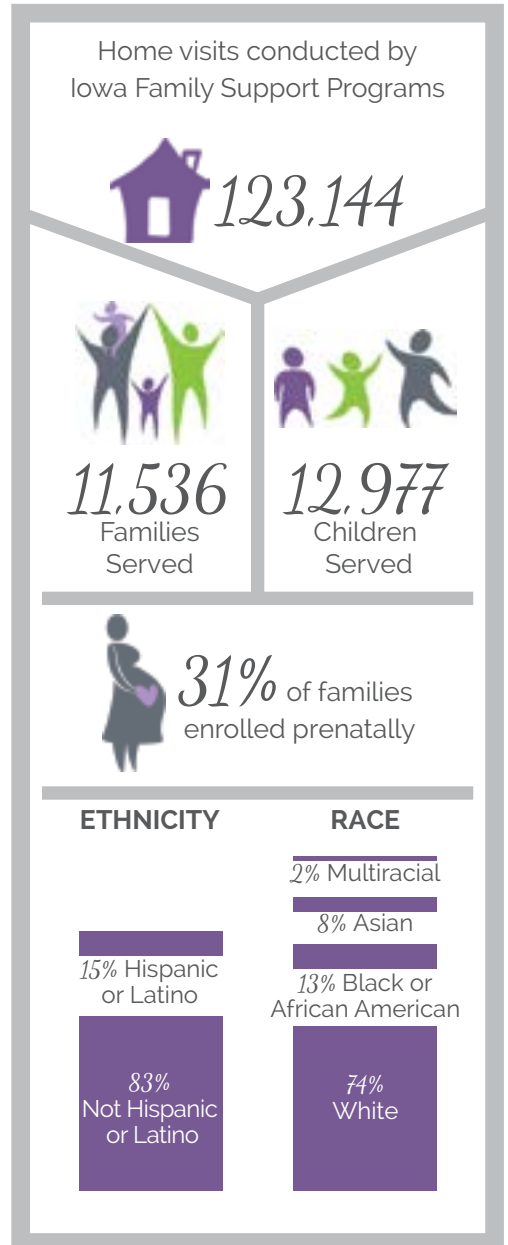
Since 1989, Iowa has coordinated efforts to promote the stability and resilience of families across the state through education, prevention, and early intervention. Local, statewide, and national programs that offer home visiting and group-based parent education target new and expecting families experiencing risk factors such as low income or limited education. The goal is to give parents the tools to raise healthy children from conception.

All programs are voluntary. Depending on the needs of the family, services may include health and developmental screenings, establishing social support systems, and teaching parents about everything from breast-feeding and pre-literacy skills to appropriate disciplinary techniques.

In 2019, a total of 123,144 home visits were conducted by family support personnel in Iowa. That translates to 11,536 families and 12,977 children receiving vital services. As impressive as these numbers are, especially in light of diminished funding, there is more work to be done. According to recent estimates, nearly 183,000 Iowa families could benefit from participation in family support programs.

Nurturing the next generation of Iowans

Across the state, a network of family support programs reaches out to parents and children in need.



Raising RESILIENT IOWA FAMILIES

Information on this report is based on FY19 FSSD, MIECHV, and other statewide family support data. For more information please visit the following links:

For the full 2019 Technical Report, [go to this link](#).

For the full 2018 Technical Report, [go to this link](#).

For the full 2017 Technical Report, [go to this link](#).

