



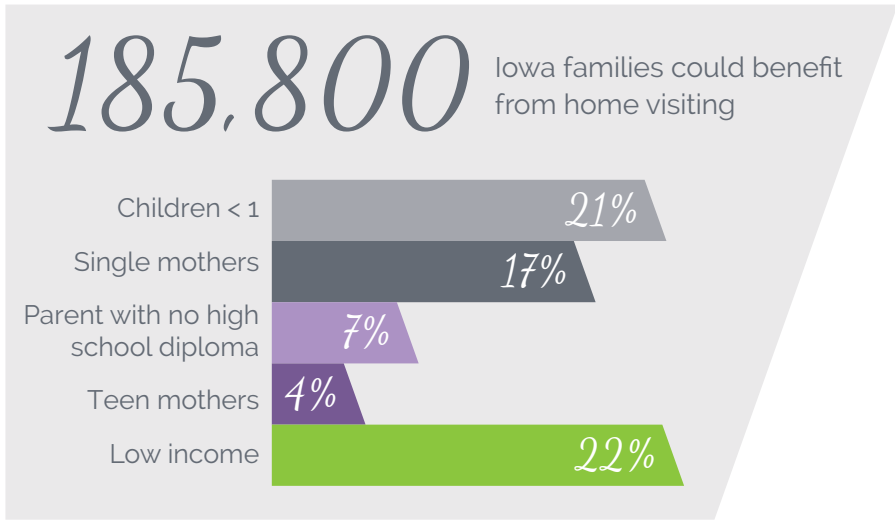
REACH

Since 1989, Iowa has coordinated efforts to promote the stability and resilience of families across the state through education, prevention, and early intervention. Local, statewide, and national programs that offer home visiting and group-based parent education target new and expecting families experiencing risk factors such as low income or limited education. The goal is to give parents the tools to raise healthy children from conception.

All programs are voluntary. Depending on the needs of the family, services may include health and developmental screenings, establishing social support systems, and teaching parents about everything from breastfeeding and pre-literacy skills to appropriate disciplinary techniques.

In 2017, a total of 134,738 home visits were conducted by family support personnel in Iowa. That translates to 14,186 families and 19,097 children receiving vital services. As impressive as these numbers are, especially in light of diminished funding, there is more work to be done. According to recent estimates, 185,800 Iowa families could benefit from participation in family support programs.

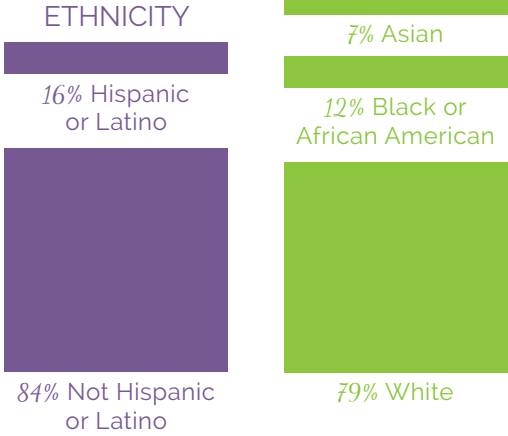
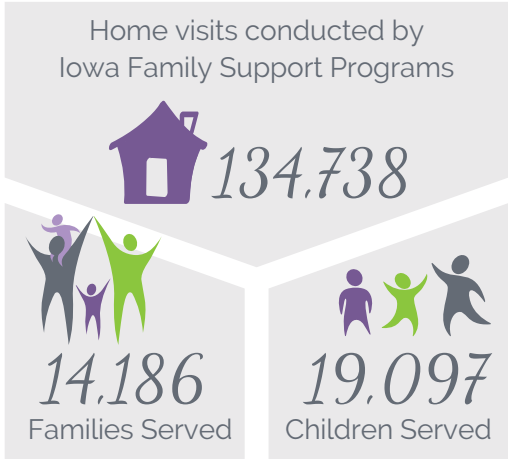
Nurturing the next generation of Iowans
Across the state, a network of family support programs reaches out to parents and children in need.



Above information is a part of the National Home Visiting Resource Center profile for Iowa. nhvrc.org/state_profile/ia

Success STORY

Two years ago, a mother who had recently immigrated from the Congo enrolled in a local family support program. She spoke no English and was living at a friend's house, where she and her infant slept on the couch. Since then, she has learned English, attended a state community college, and earned her Certified Nurse Aide degree. She has also obtained her own housing. Her child will soon transition to a preschool classroom.



Raising Resilient Iowa Families

Information on this report is based on FY17 FFSD, MIECHV, and other statewide family support data. For the full technical report, please go to iowafamilysupportimpact.org/report

